

Instrumentation

Instruments	Used
Source 4 10deg	13
Source 4 19deg	46
Source 4 26deg	62
Source 4 36deg	76
Source 4 50deg	40
Source 4 90 Deg	5
Source 4 90deg LED	2
Source 4 LED CYC	6
PAR 64 MFL	4
PAR 64 WFL	4
6" Fres	28
S4 PAR MFL	8
S4 PAR WFL	36
Altman Zip Strip	3
3-Cell Ground Cyc	7
Studio Spot 575	2
Studio Color 575	3

Accessories

Accessories	Used
6.25" Color Scroller	24
Rosco I-Cue Mirror	4
DMX Iris	4

Notes

~All instruments should be hung with color and gobos dropped prior to the focus call.
 ~Exact positioning of all Back Wall and Ground Row units will be decided by the designer when the set is in place and units are ready to be placed.
 ~Exact placement of the CYC Boom positions will be decided by the designer when the set is in place and the booms are built.
 ~See Plate #4 (Explosion Plot) for details on Tail Downs, Box Booms, and Slots
 ~All Fresnel units on Truss 1 DS, Truss 1 SR Extension, and Truss 1 SL Extension should be siderarmed out to the length that is drafted on the plot (Plate #1-Light Plot).

~Truss 2 should be a priority in the hang so that it can be raised out of the way of scenery ASAP.
 ~All LED instruments should be in "RGB +7" with a 3200K white point and an incandescent dimming curve.
 ~All I-Cue Mirrors should be addressed in 16-bit mode.
 ~The plot will be accented by two (2) Base Hazers and one (1) Le Maitre G300 Fogger to be placed by the designer. Continue communication with the T.D. and L.D. for further information.

Label Legend

xx / xx = Split Gel
 xx (xx) = Multi-Gel

Color
 Purpose
 Gobo 1
 Unit #
 Channel

Light Plot

Lighting Designer Aaron J. Crosby	Venue Tomlinson
Assistant Lighting Designer Dylan Wallace	Director Peter Reynolds
Master Electrician Nicole Rolo	Scenic Designer Fred Duer

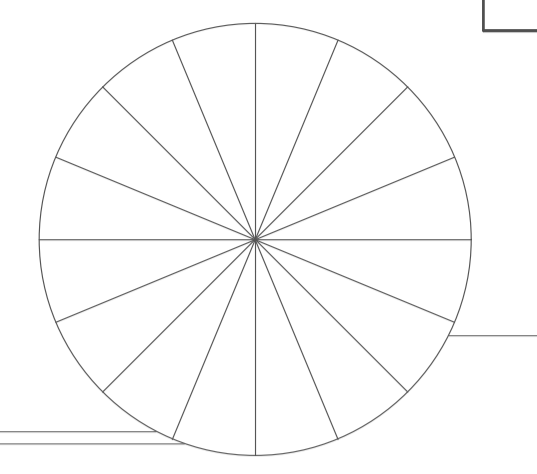
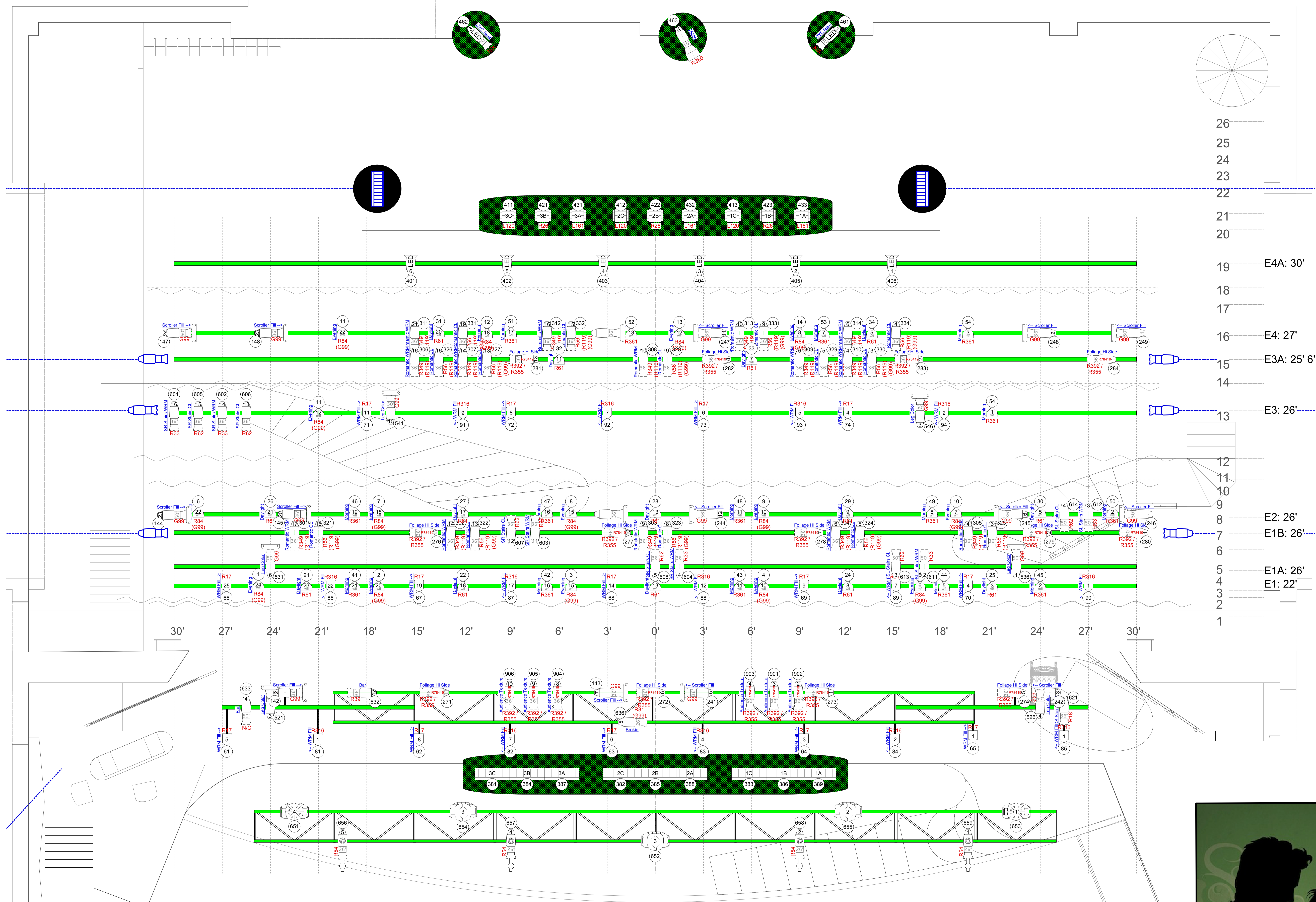
Scale

1/4"

Plate

1 OF 4





Notes

-All instruments should be hung with color and gobos dropped prior to the focus call.
-Exact placement of the CYC Boom positions will be decided by the designer when the set is in place and the booms are built.
-Pit Mount units (3 @ Altman Zip Strip) need to be mounted off the edge of the pit. Please work with the T.D and L.D. as to exact placement. As long as it is safe and as unobtrusive to the audience as possible, feel free to mount them in any way you deem fit.
-Units #1, #2, #4, and #5 should have an I-Cue Mirror and DMX iris attached to the unit.

-All LED instruments should be in "RGB +7" with a 3200K white point and an incandescent dimming curve.
-All I-Cue Mirrors should be addressed in 16-bit mode.

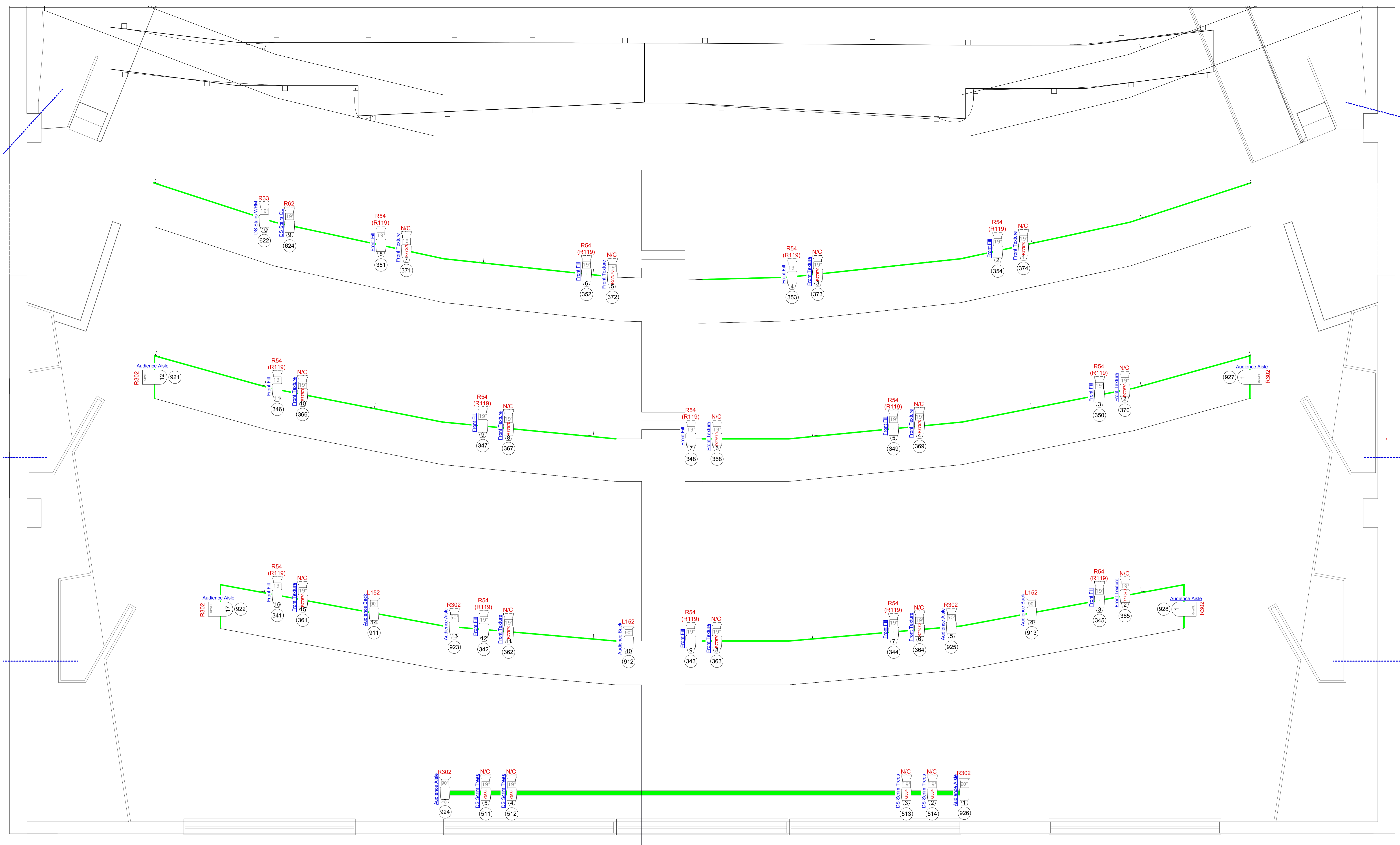
Stage Plot

Lighting Designer
Aaron J. Crosby
Assistant Lighting Designer
Dylan Wallace
Master Electrician
Nicole Rolo

Venue
Tomlinson
Director
Peter Reynolds
Scenic Designer
Fred Duer

Scale
1/2"
Plate
2 OF **4**





Notes

~All instruments should be hung with color and gobos dropped prior to the focus call.

FOH Plot

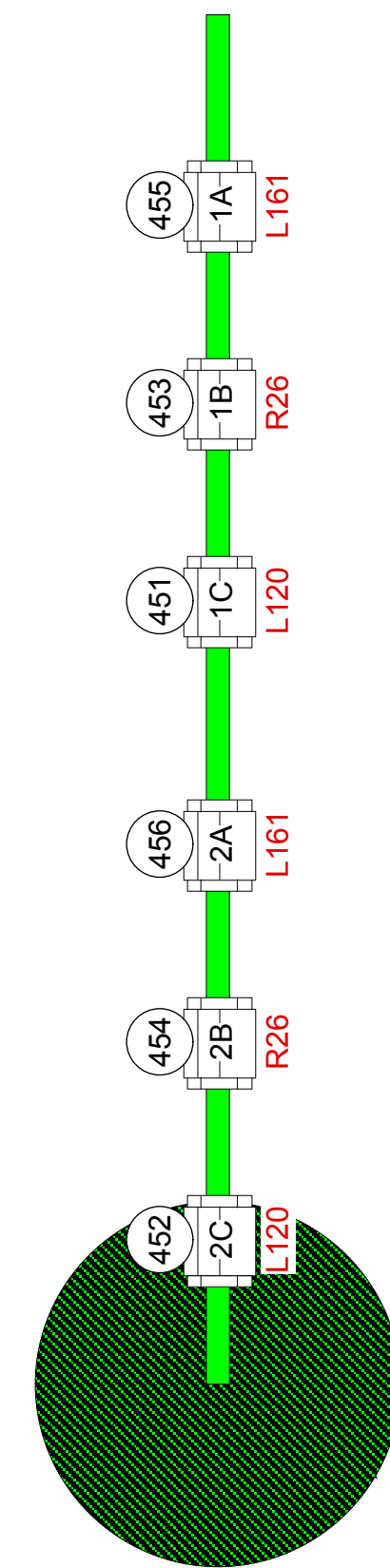
Scale
1/2"

Lighting Designer Aaron J. Crosby	Venue Tomlinson
Assistant Lighting Designer Dylan Wallace	Director Peter Reynolds
Master Electrician Nicole Rolo	Scenic Designer Fred Duer

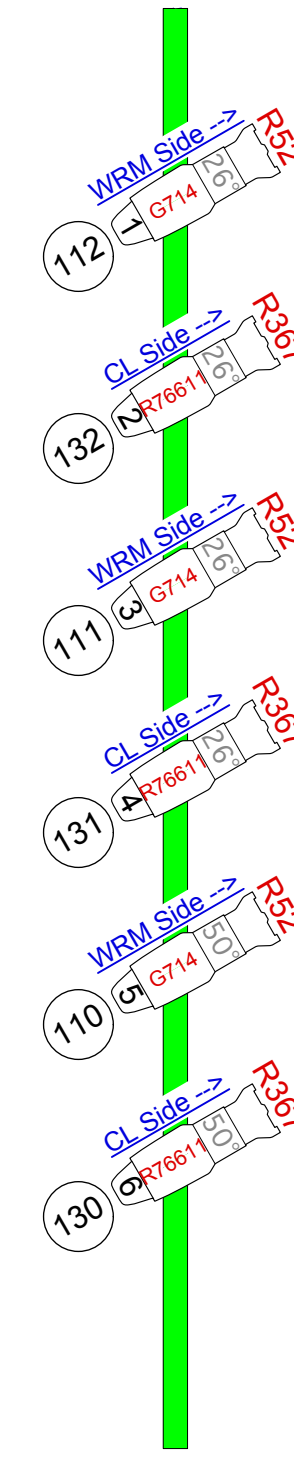
Plate
3 OF **4**



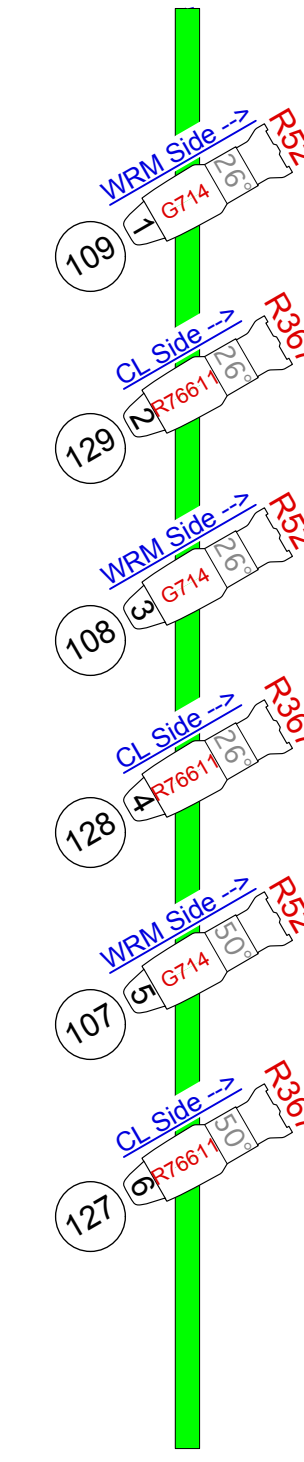
SR Cyc Boom



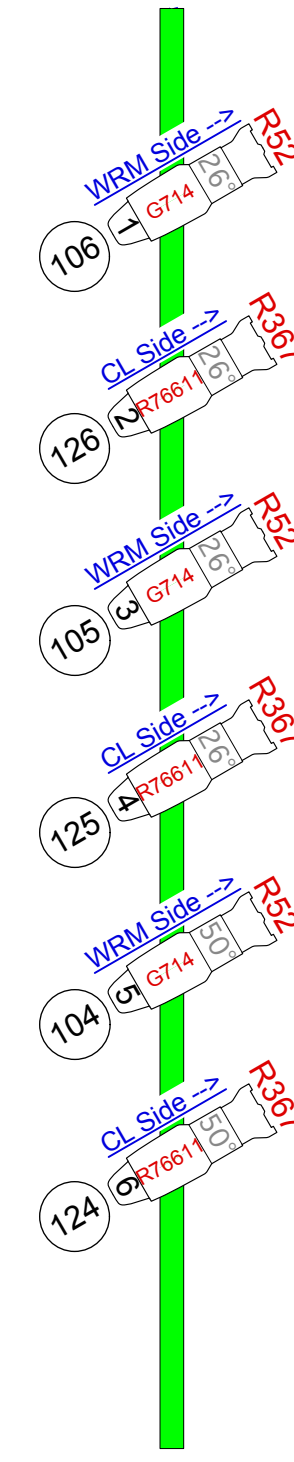
SR TD #3



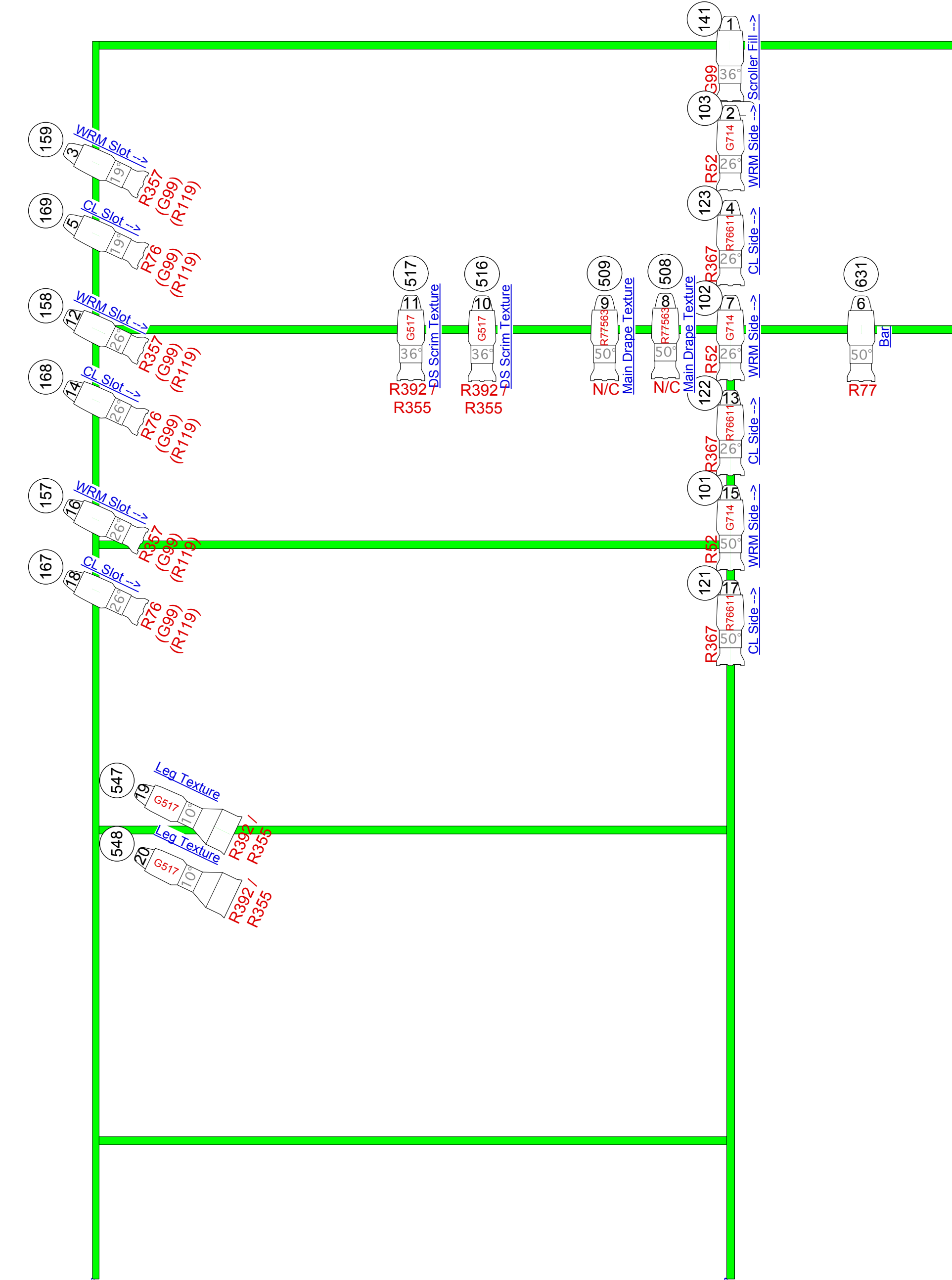
SR TD #2



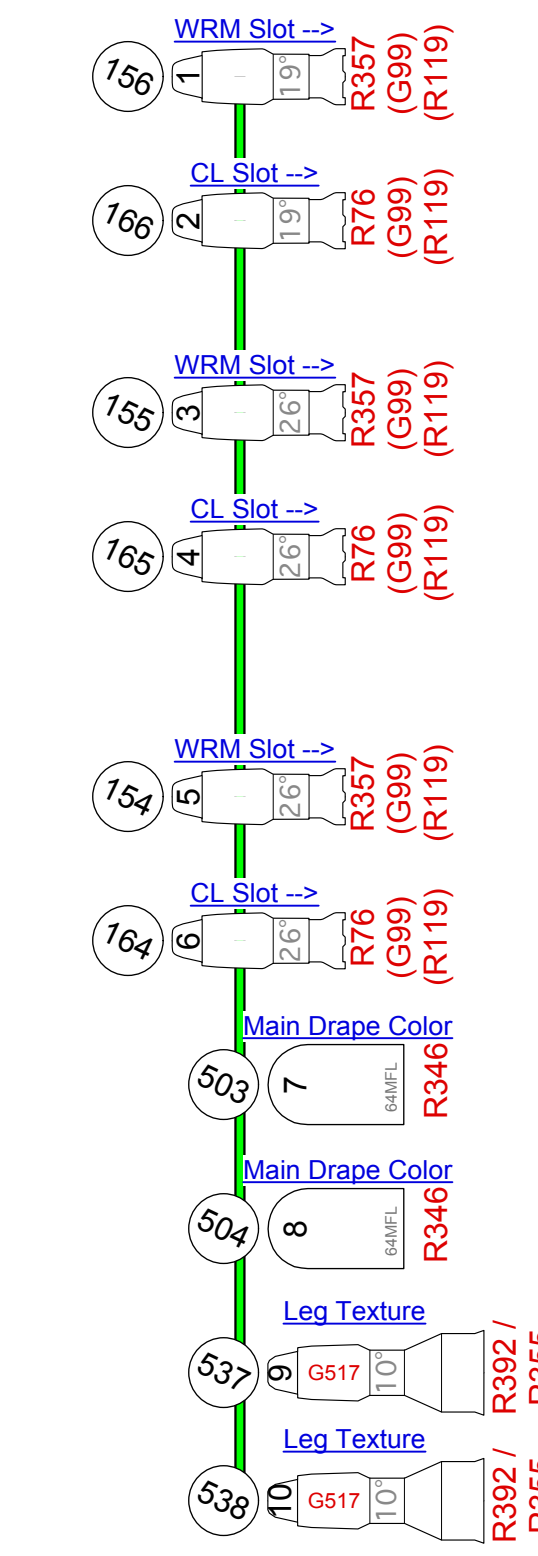
SR TD #1



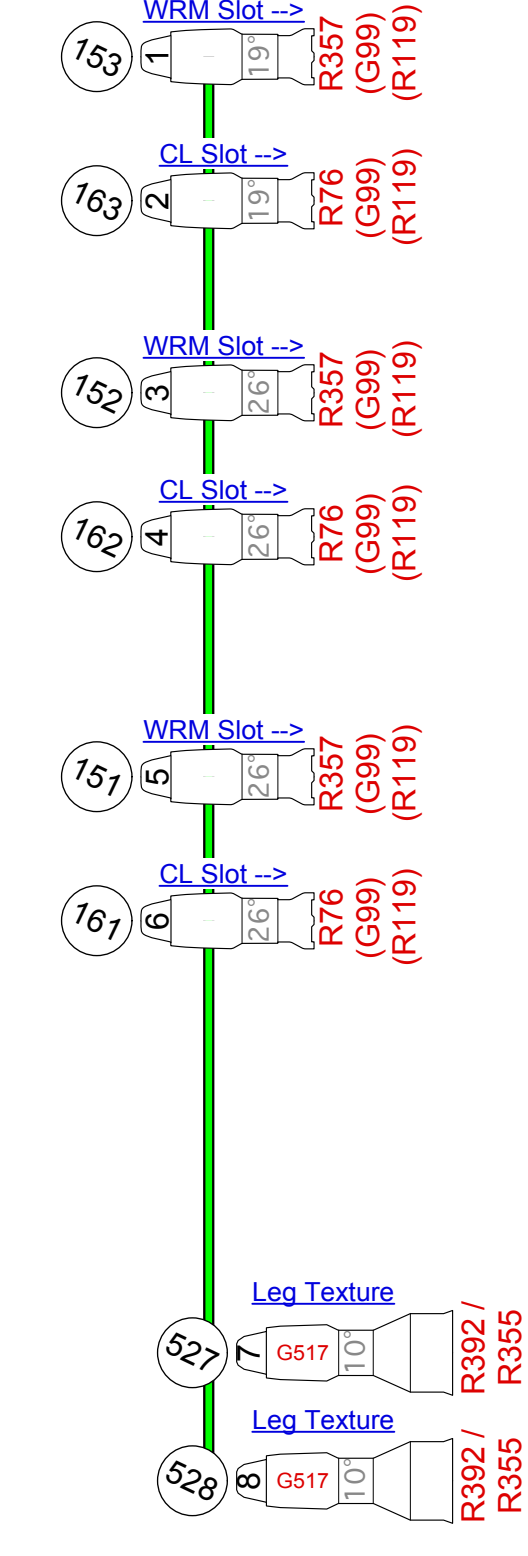
SR Box Boom



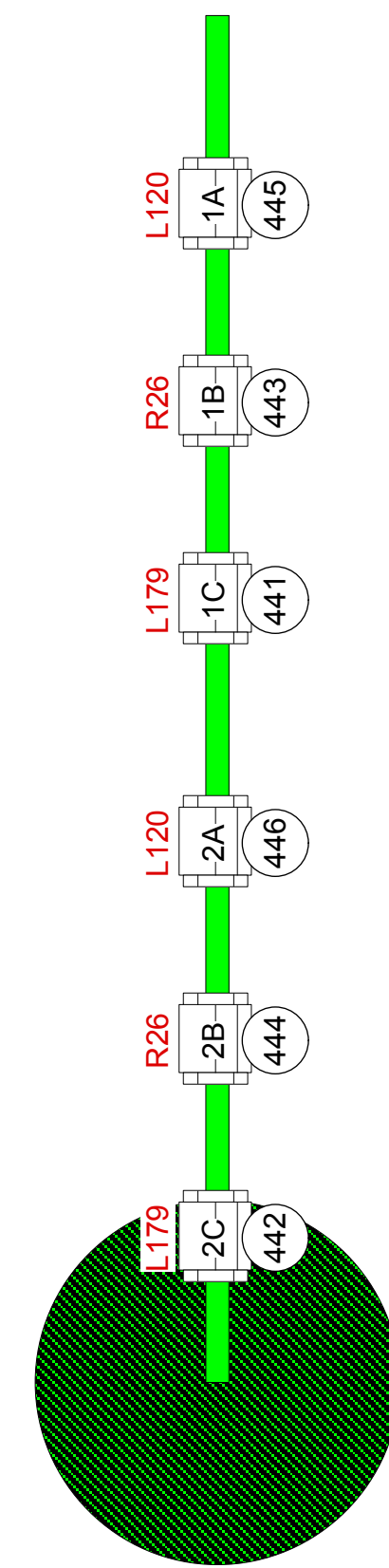
SR Slot #1



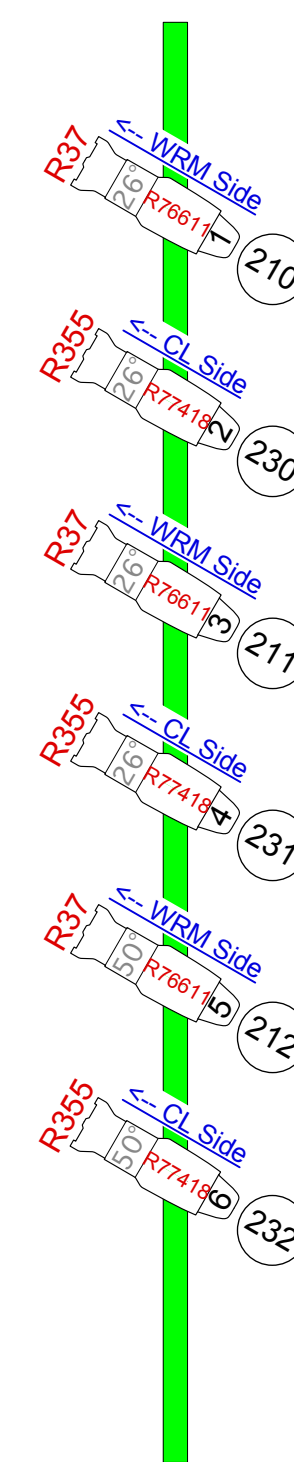
SR Slot #2



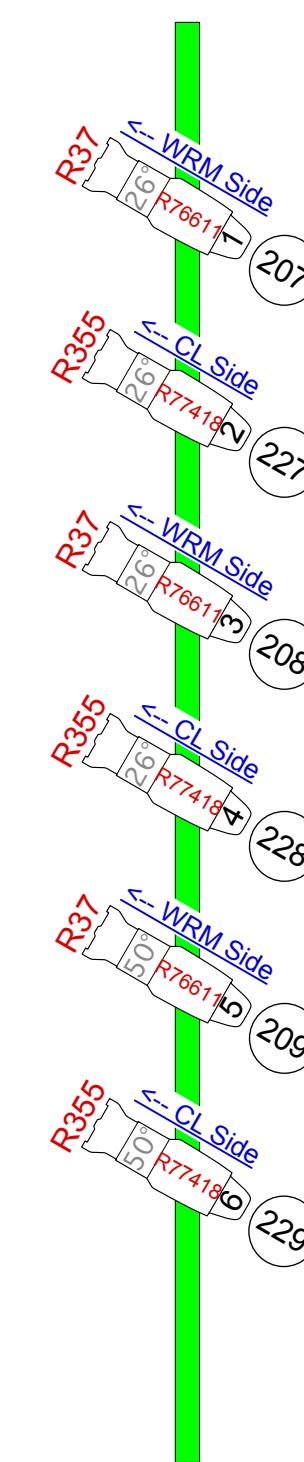
SL Cyc Boom



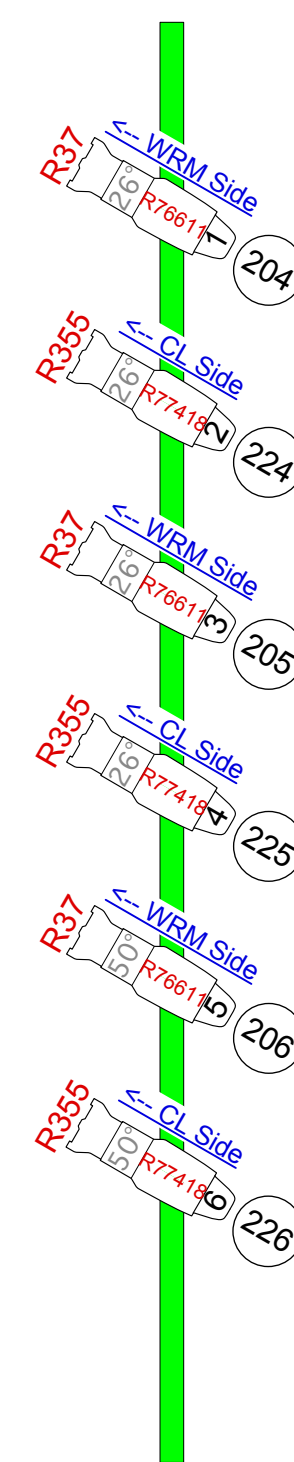
SL TD #3



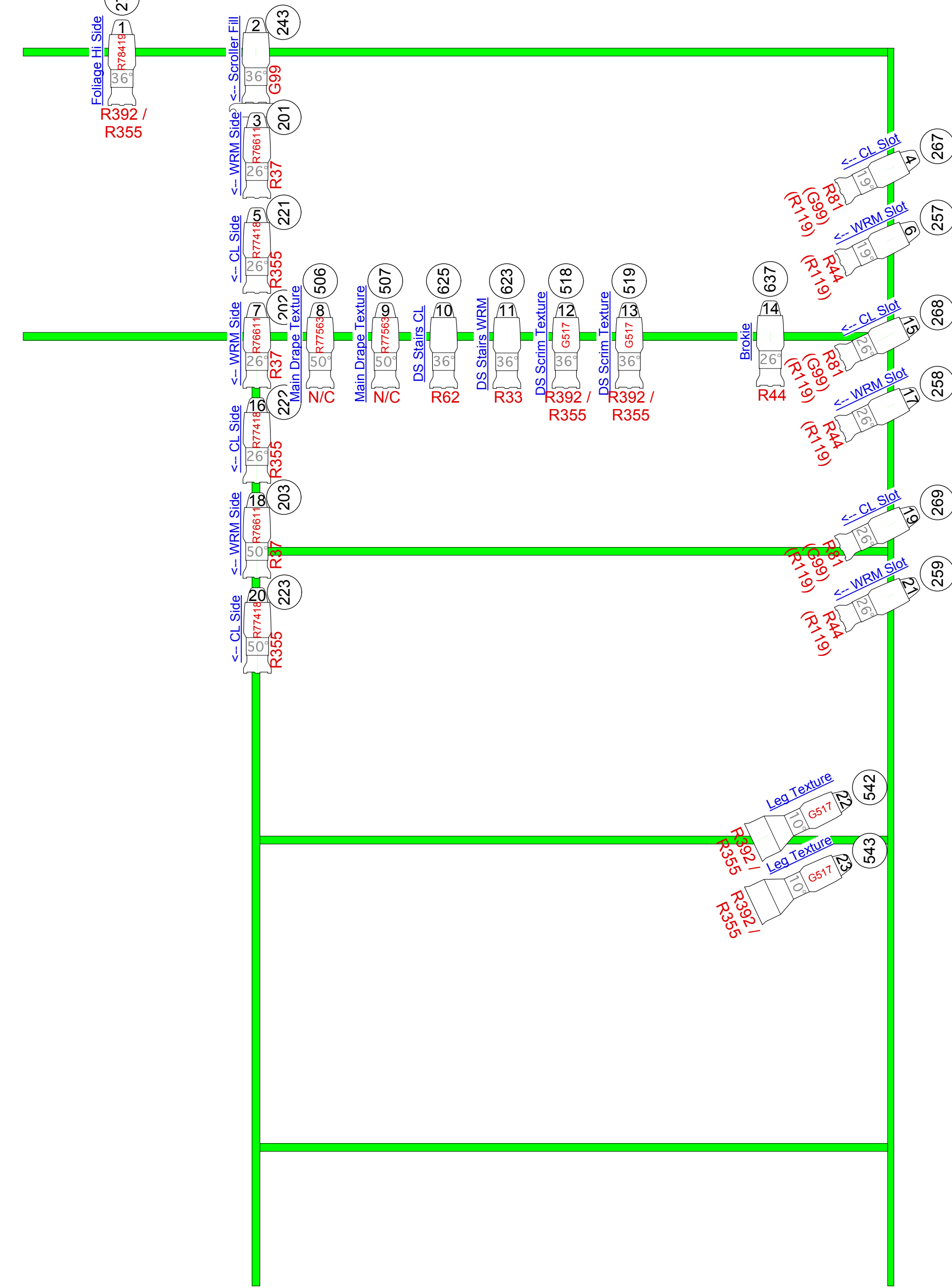
SL TD #2



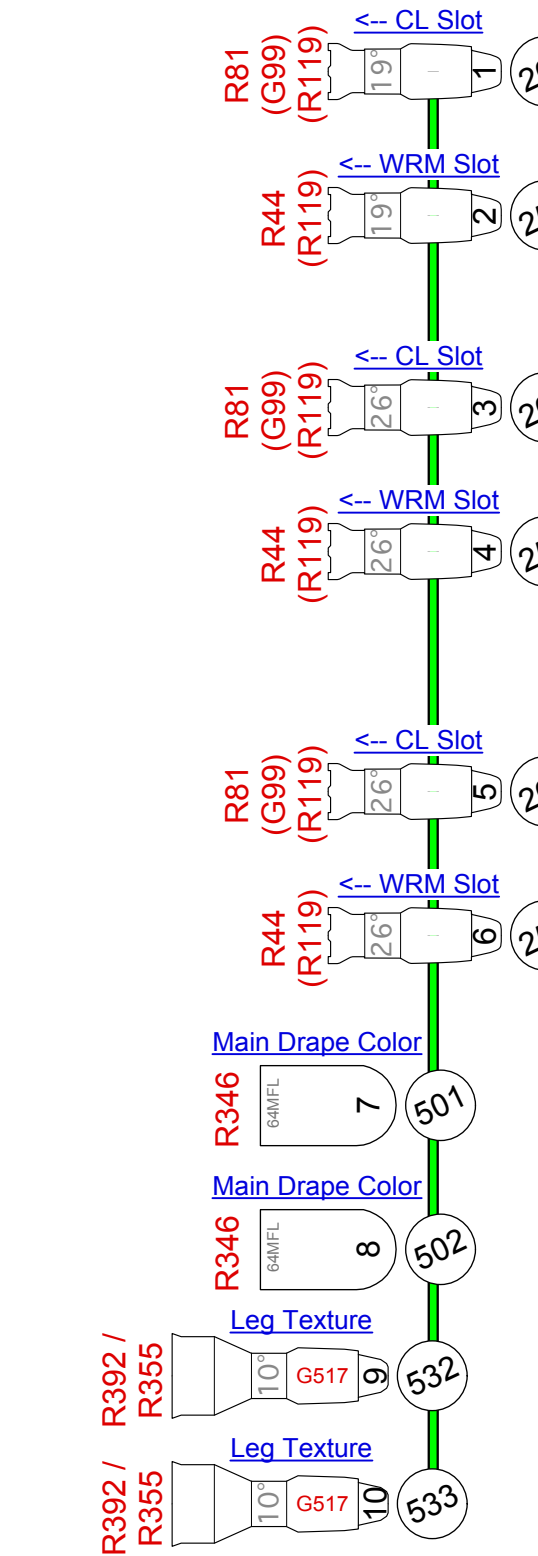
SL TD #1



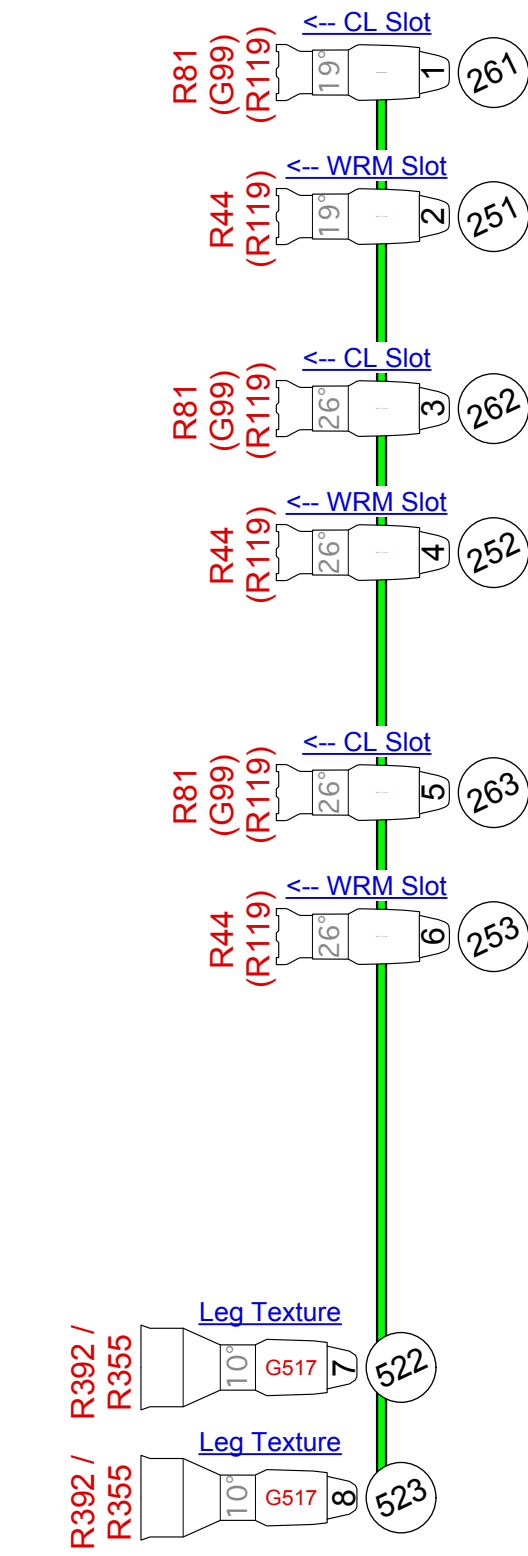
SL Box Boom



SL Slot #1

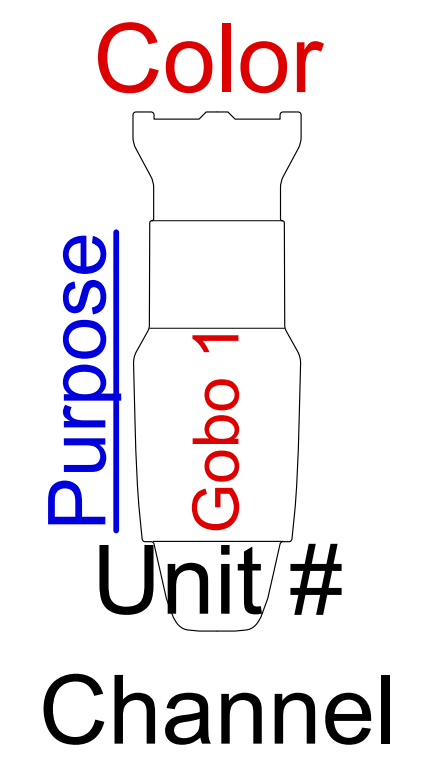


SL Slot #2



Label Legend

xx / xx = Split Gel
xx (xx) = Multi-Gel



Instrumentation

Instruments	Used
Source 4 10deg	13
Source 4 19deg	46
Source 4 26deg	62
Source 4 36deg	76
Source 4 50deg	40
Source 4 90 Deg	5
Source 4 90deg LED	2
Source 4 LED CYC	6
PAR 64 MFL	4
PAR 64 WFL	4
6" Fres	28
S4 PAR MFL	8
S4 PAR WFL	36
Altman Zip Strip	3
3-Cell Ground Cyc	7
Studio Spot 575	2
Studio Color 575	3

Accessories

Accessories	Used
6.25" Color Scroller	24
Rosco I-Cue Mirror	4
DMX Iris	4



Notes

~All instruments should be hung with color and gobos dropped prior to the focus call.
~The measurements for the ALL Tail Down instruments should be taken from the top of the position on the plot. The top of the position on the plot correlates to the intersection of the Tail Down and the Batten on which it hangs.
~Unit #1 in each slot position should be hung as high as possible with all other measurements being taken off that position.
~Units #7, #8, #9, and #10 on SL Slot #1 should be hung on an 18" Sidearm.
~Units #7, #8, #9, and #10 on SR Slot #1 should be hung on an 18" Sidearm.

~Units #7 and #8 on SL Slot #2 should be hung on an 18" Sidearm.
~Units #7 and #8 on SR Slot #2 should be hung on an 18" Sidearm.
~Units #22 and #23 on SL Box Boom should be hung on an 18" Sidearm.
~Units #19 and #20 on SR Box Boom should be hung on an 18" Sidearm.
~Each CYC Boom position should receive two (2) 3-Cell Ground Cyc Units hung vertically. The units should start as close to the ground as possible and should be as close to each other as possible, while still being able to focus both units.

~Exact placement of the CYC Boom positions will be decided by the designer when the set is in place and the booms are built.

Explosion

Scale
1/2"

Lighting Designer
Aaron J. Crosby

Venue
Tomlinson

Assistant Lighting Designer
Dylan Wallace

Director
Peter Reynolds

Master Electrician
Nicole Rolo

Scenic Designer
Fred Duer

Plate
4 OF 4